



AGW-NET WORKPLAN 2009

Introduction.

The Africa Groundwater Network (AGW-Net) is still in its initial stages of formation and much work needs to be directed towards the establishment of fundamental network structures. In addition the network needs to initiate as many activities as feasible so that the network members remain engaged and can participate in activities that promote the goals of the network. The work planned towards identifying and achieving some of these goals is laid below out in this report.

Vision.

Objectives of the network. The network has previously defined its objectives in its 2008 brochure. These are listed below:

- Build capacity for improved groundwater management at all levels;
- Promote Integrated Water Resources Management (IWRM) practice in the groundwater sector;
- Improve awareness of groundwater resources;
- Foster groundwater research and academic cooperation;
- Enhance the sharing of information;
- Improve the level of integration between surface and groundwater practitioners; and
- Provide a positive contribution to the realisation of regional and continental development goals with regard to groundwater.

The network members may continually adjust and add to this initial vision of the objectives of the network.

Constitution / Governance Guidelines.

The network at present has no constitution or guidelines for governance. These will be developed as a priority during the coming year. Guidelines and constitutions from some of the other networks are available to AGW-Net to assist in the formulation of our own governance statutes and structures. At this initial stage, a steering committee has been appointed to help prepare these governance guidelines, including the terms of reference for the steering committee itself, before they are circulated to the full membership for feedback and ultimate adoption.

Strategy.

The strategic plan for the development of the network envisages interaction between several elements. These include the structural elements of the network, its planned activities and methods to achieve these, its institutional partners and supporters, its membership and the focus of its output. Clearly this is not comprehensive at this stage as it does not include issues of impact monitoring, network diversification, country chapter development etc. The diagram below shows the key elements of the network at this stage, with all elements interacting through their participation in the network. The early foundation requirements for the initial development of the network are seen as the following: 1) development of the membership, 2) establishment of a steering committee and 3) identification of a host institution.

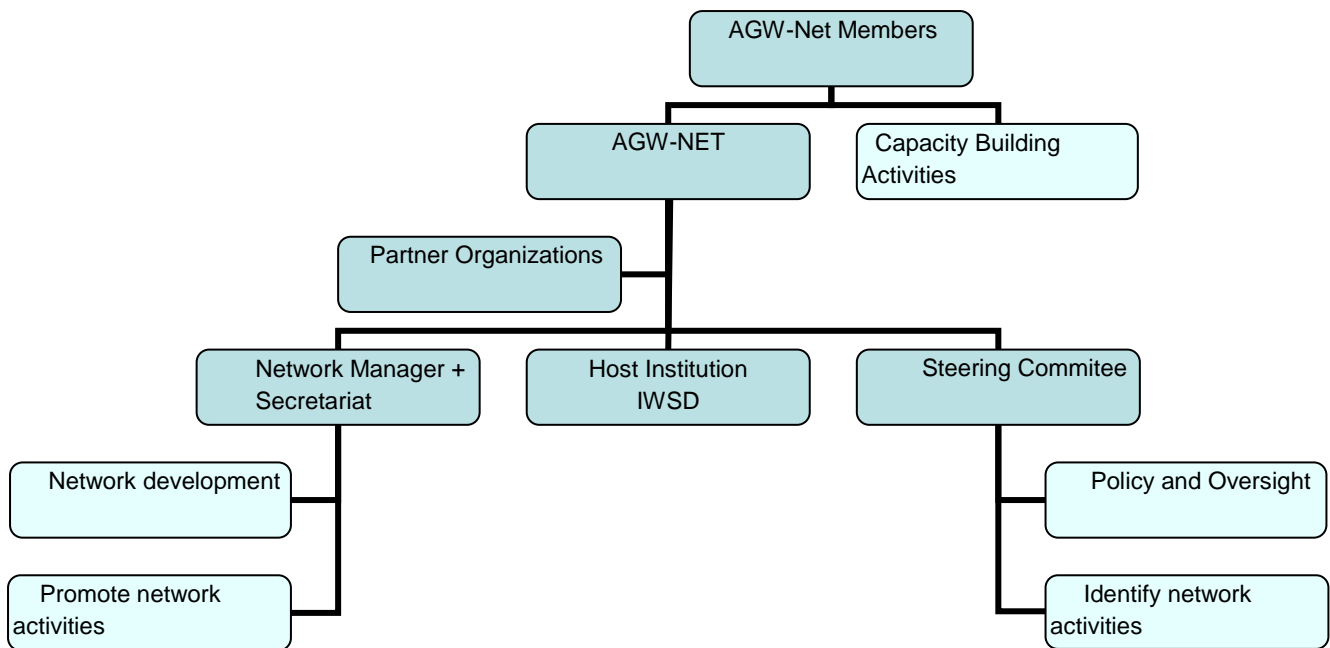


Diagram – the Proposed Organizational Structure for AGW-Net.

Dark blue boxes are structures and light blue boxes are responsibilities / activities.

Methodology.

AGW-Net is primarily a groundwater capacity building network. The niche methodology that AGW-Net envisages to achieve this capacity building is the use of short courses aimed at a wide variety of people and sectors who interact with and use the groundwater resource. Short Training of Trainers courses (ToT) are considered a fundamental preliminary component to improve the capacity of network members to achieve the network objectives. Discussions are underway with GWMate (World Bank GroundWater Management Advisory Team) to organize some ToT courses in groundwater management for the network membership.

Network members are also actively involved in developing other short courses for various water sector professionals, including water managers, hydrogeologists, etc. The present focus is on groundwater management, sustainable groundwater development and the data requirements needed to achieve these goals.

The network is also establishing links with regional and global partners who support the goal of sustainable groundwater management and use. In some cases, the network envisages interacting with these partners to supply their requirement for groundwater training and capacity building, and in other cases, the network looks towards these partners for financial support to help deliver some short courses etc.

Plans and Activities for 2009.

Based on the foregoing, a number of plans and planned activities are envisaged for 2009. These may be subdivided into those activities aimed at the structural establishment of the network (establishment activities) and those activities aimed at capacity building and outreach (development activities). The establishment activities are mostly undertaken by the network manager and secretariat with support from the steering committee. Capacity building activities are mostly undertaken by the network members with support from the partner and donor organization, facilitated by the network manager and steering committee.

Establishment activities: (planned and underway)

- Identify host institution and implement network financial management system. The **Institute of Water and Sanitation** in Harare, Zimbabwe, has been identified as a suitable host, been approved by the SC and an MoU has been prepared.
- Develop membership form and compile and disseminate membership list
- Identify and establish steering committee
- Produce constitution and guidelines
- Establish links with partners
- Identify work-plan and activities
- Disseminate information to members
- Develop web page

Development activities: (planned and underway)

- Training of trainers: GWMate course for network membership. Discussions are underway with GWMate.
- Develop & deliver short courses (planned 2009):-
 - Groundwater management for water managers: a role of hydrogeological science. At Wits university, Johannesburg, South Africa
 - Groundwater management within IWRM: a) Cheikh Anta Diop University, Dakar, Senegal and b) Kwame Nkrumah University of Science and Technology, Accra, Ghana.
 - Cost Effective Borehole Drilling, Design and Aquifer Assessment for Groundwater Practitioners, Managers and Supervisors National Water Resources Institute, Kaduna, Nigeria + RWSN (Rural Water Supply Network)
 - Regional Training on Groundwater Exploration & Water Quality Management. University of Dar es Salaam Department of Geology, Tanzania.
 - Preparation of a training manual for Groundwater Management within the IWRM framework.

Budget for 2009...

Budget Estimates for 2009.

i) Network development and management

ii) Capacity building activities

Network Development & Management Activities				
Activity	Time	Unit cost	Total	Source of Funds*
Network administration – administrative assistant. Correspondence, office management etc	½ time	\$500 pm	\$6000	CapNet seed grant
Web site development and management	Initial cost + update quarterly	\$1000 + \$800 per year	\$1800	CapNet seed grant
Communications – email / telephone, stationery etc	Monthly	\$100 pm	\$1200	CapNet seed grant
Office Equipment – laptop; digital camera	Once		\$1300	CapNet seed grant
Administration fee to host (Institute of Water & Sanitation Development – IWSD)		5%	\$500	CapNet seed grant
Total			\$10,800-	

* CapNet seed funds are \$10,000 per year. Any excess in expenditure needs to come from AGW-Net earnings from its activities such as mounting short courses.

AGW-Net Capacity Building Activities.				
Activity	Venue	Date	Cost est.	Partners
Short Course: Groundwater management for water managers: a role of hydrogeological science.	Wits university, Johannesburg, South Africa	6-10 July 2009	\$75,000 @25000 each	Splash Cap-Net Wits
Groundwater management within IWRM	Cheikh Anta Diop University, Dakar, Senegal	2009	\$75,000 @25000 each ??	?Cap-Net ?Splash CAD Uni.
Groundwater management within IWRM	Kwame Nkrumah University of Science and Technology, Accra, Ghana	2009	\$75,000 @25000 each ??	?Cap-Net ?Splash KNUST
Cost Effective Borehole Drilling, Design and Aquifer Assessment for Groundwater Practitioners, Managers and Supervisors (same course in Mozambique ??)	National Water Resources Institute, Kaduna, Nigeria / RWSN (Rural Water Supply Network)	2009	\$75,000 @25000 each ??	?CapNet ?RWSN NWRI
Regional Training on Groundwater Exploration & Water Quality Management.	University of Dar es Salaam Department of Geology, Tanzania.	2009	\$75,000 @25000 each ??	?CapNet ?Splash UDSM
Preparation of training materials and a training manual on groundwater management within IWRM	AGW-Net and Nile IWRM net managers	2009	?	CapNet

* ?? means funds not yet committed. Local host institution contribution is not cash, but facilities.

Summary

As may be seen from this work-plan, the Africa Groundwater Network is at the early stage of its life. A number of activities to do with basic network establishment, such as securing a host institution and a bank account etc. still remain to be done. The network has no guidelines and the steering committee has no terms of reference at this time.

In addition to these network management issues, the network is trying to initiate a number of short courses. One course has already received funding support and is due to be presented at Wits University Johannesburg in July 2009. Another course has been previously presented by WANet and is due to be presented again in by AGW-Net in both Senegal (French version) and in Ghana (English version). Negotiations are underway with regards to funding for these two courses. Recently a partner (RWSN – Rural Water Supply Network) has agreed to work with AGW-Net in preparing a course on cost effective borehole drilling / groundwater development and some interested network members have already been identified.

The development of the network structure and the development of capacity building activities are the two main priorities for AGW-Net in 2009.

Signed

Richard Owen
Network Manager for AGW-Net.
2 March 2009.